



SPECIFICATION BROCHURE

neffliving.com



ABOUT NEFF BEAUTIFUL LIVING

MAKING THE MONOGRAM.

The story began in 1966, when a German engineer came to Canada and shaped an industry by combining old-world craftsmanship with the modernity of automotive products and processes. The engineer was Paul NEFF, and his idea is, to this day, the foundation and guiding principle of NEFF Beautiful Living.

In time, those cabinets evolved to do more, to be more. For over five decades now, NEFF has been recognized as one of the world's leading international manufacturing companies, crafting fine cabinetry, kitchens, custom closets, hospitality lounges and retail experiences that reimagine what it means to live beautifully.





DEALER ACCELERATION THROUGH NEFF INNOVATION



THE COMPLETE PROCESS

NEFF's solution-based offering allows our clients to become more than dealers; they grow into custom millwork shops with the ability to target high-end architects looking for personalized products.

The start-to-finish process involves standardized systems and industry-leading expertise from initial design to end installation. With BaseCamp's state-of-the-art project management software, our dealers and their customers receive full transparency, open communication and remain intimately involved in the process.

With their very own dedicated NEFF representative, our dealers receive White-Glove support and training on every aspects of the process, along with standardized documents that cover pricing, design, in-take sheets and pre-site inspections.

FULL SUITE

10 Weeks
After Final Processing Sign Off

EFFICIENCY

24 Hours
Quote

EXPERTISE

1 - 2 Weeks
Shop Drawings

PRECISION

Patented Dry-Fit Process
Stages Product Before Shipping

ACCOUNTABILITY

Staging Checklist Certificate
Must Be Signed Internally

PERSONALIZED

NEFF's in-house
installation team



PRODUCTS

INSIDE THE BOX.

Most NEFF finishes are protected by layers of acrylic urethane, deposited through a specialized process developed by the high-end automotive and aerospace industries.



EURO-LAMINATES

BEAUTY AT ITS TRUEST

The result of industry-leading one-to-one grain reproduction, these masterful products bring out the true beauty of exotic wood while leaving the tree in the forest. Choose from a palette of over 80 patterns available in a variety of textures. Add lustre with NEFF's low-sheen or hand-polished, high-gloss top coats. Our Euro-Laminates are available in Woodgrain, silk, and high-gloss finishes.



EURO-LAMINATES



PORTOFINO



CATALYST



TAHITIAN VANILLA



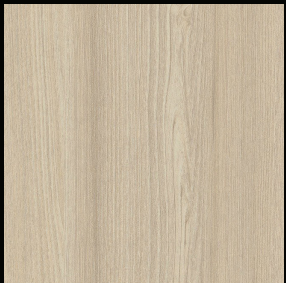
STONE GREY FROZEN
WOOD



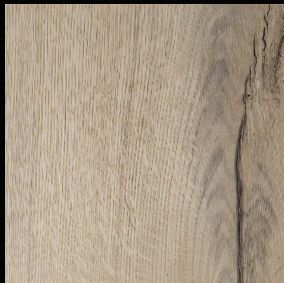
OLMO BIANCO



SEYCHELLES



WHITE TOSSINI ELM



CRIMSON OAK



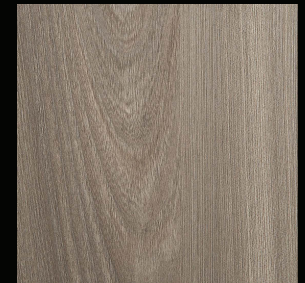
DRIFTWOOD OAK



GREY VICENZA OAK



LIMED ASH



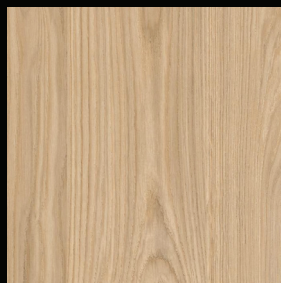
WINE N DINE



WEATHERED OAK



BEACHWOOD



LIGHT NATURAL
CASELLA OAK



BELLEMENT TOUX



HONEY



BLEACHED VICENZA
OAK

EURO-LAMINATES



GOLDKENN



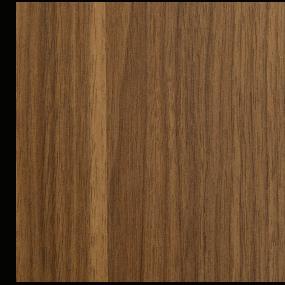
OMAHA TAN OAK



NATURAL TOSSINI
ELM



VERMILION OAK



CAMARGUE WALNUT



CARINI TRUFFLE



EUCALYPTUS



CHOCOLATE GLAZE



HAVANE TOBACCO



DENVER OAK



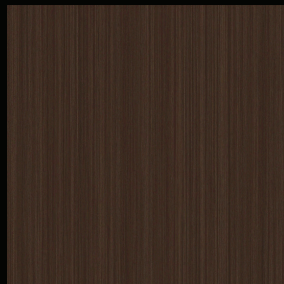
GRYPHON FIR



HAZELNUT



DARK GREY FINELINE



DARK CHOCOLATE



CHALKED OAK



CASCADE

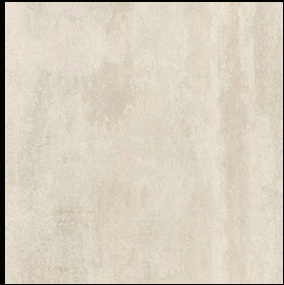


GREY TEXTILE



LEVANTO MARBLE

EURO-LAMINATES



WHITE CHROMIX



FOX GRAY



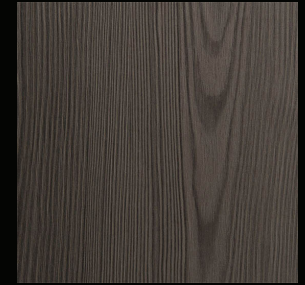
BARN PINE



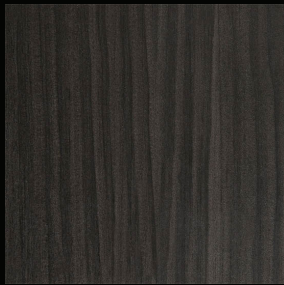
MAMARA MARBLE



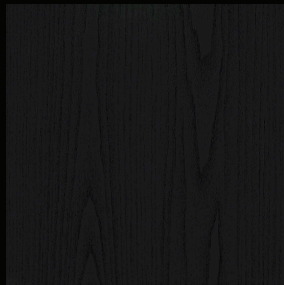
CARBON



KOJI STAR



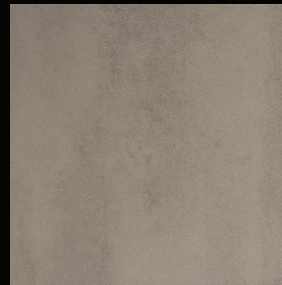
TORREFIED OAK



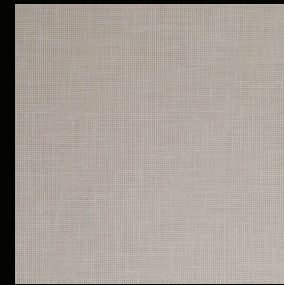
BLACK PINEGRAIN



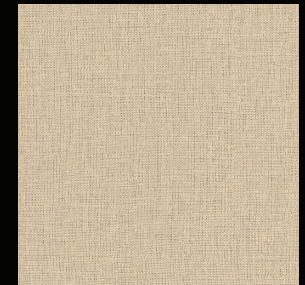
SLATE



SAFE HOUSE



BLEACHED LINEN



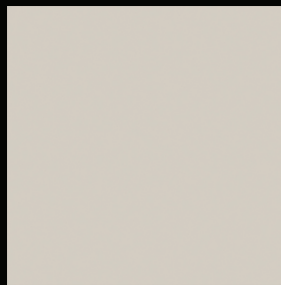
WAXED LINEN



GRAY LINEN



CHAMPAGNE BRASS



LIGHT GRAY



IRON INDIUM

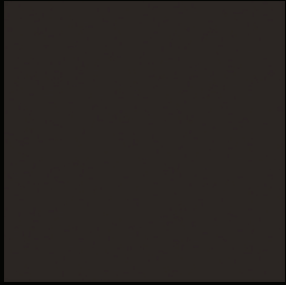


SADDLEBACK STEEL

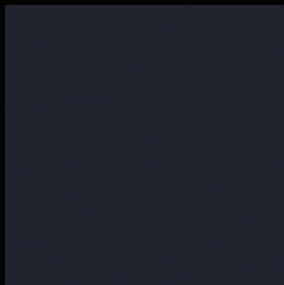


FABRIC METAL
ANTRAZITE

EURO-LAMINATES



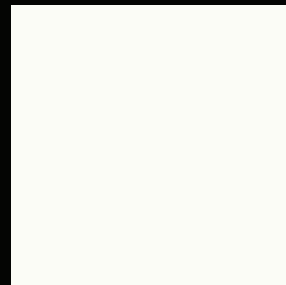
GRAPHITE GRAY



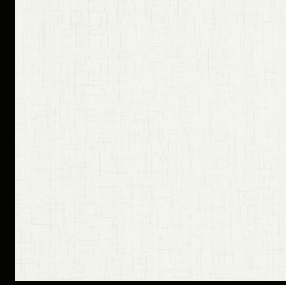
INDIGO BLUE



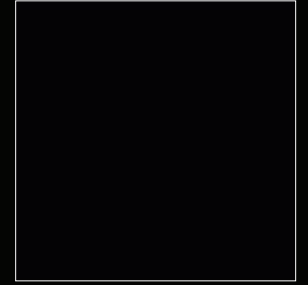
FOREST GREEN



PREMIUM WHITE



WHITE LINEN



BLACKOUT

EURO-LAMINATES

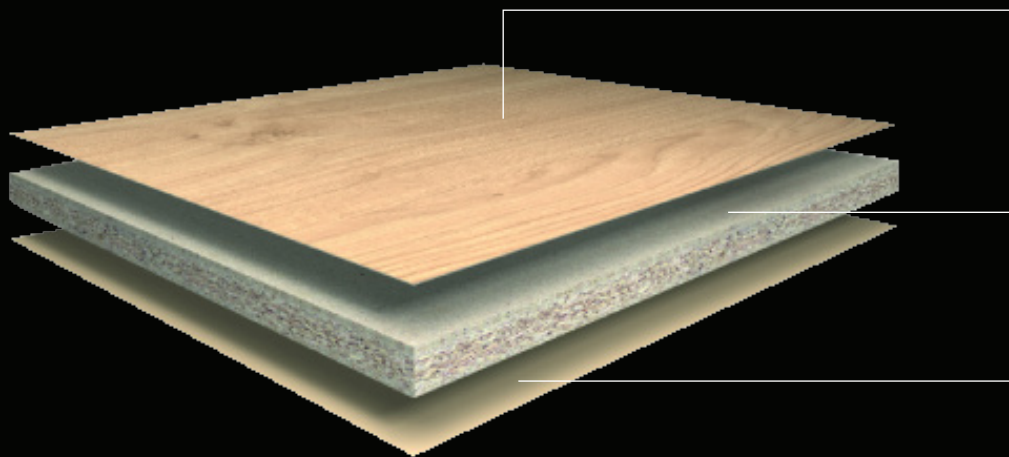
Laminates are both versatile and hard-wearing. They are ideal for mid- to high-traffic surface areas, curved applications and areas in need of postforming (standard laminates only).

Our laminates offer a multi-layer construction, with a layer of resin-infused decorative paper on the surface and multiple layers of kraft paper in the core. Laminates must be bonded to a substrate, such as particleboard or MDF, during the finishing process.

Laminates are ideal for a variety of residential and commercial applications, such as:

- Tabletops and desktops
- Countertops and backsplash panels
- Cabinets
- Door elements and wall claddings

PRODUCT CONSTRUCTION



Melamine resin-impregnated decorative paper

Eurospan Particleboard

Melamine resin-impregnated decorative paper

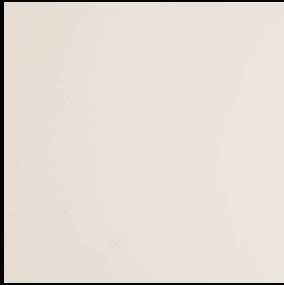
PAINTS

ELEVATING THE ARTIST'S PALETTE

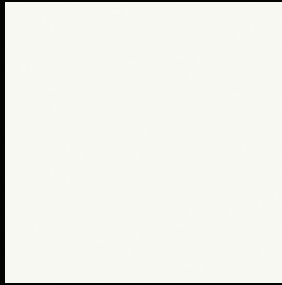
Along with its full palette, NEFF offers bespoke colors and the ability to color match any custom paint. Baked on through a resoundingly integrative process, we only use BASF automobile paints, the very same ones used on Bentleys and private jets. They are durable, easy to clean and of the finest quality—finished in matte, silk or high-gloss.



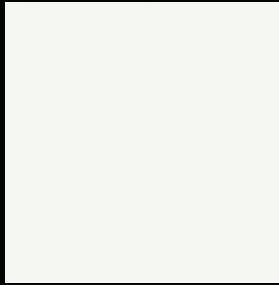
PAINTS



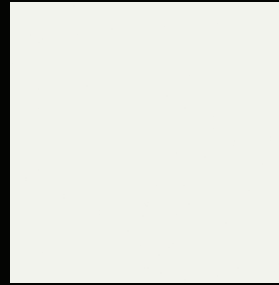
MIAMI WHITE



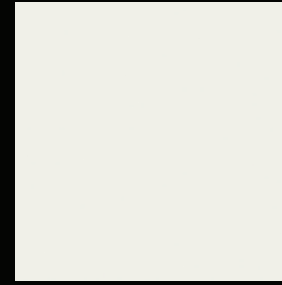
HIGH REFLECTIVE
WHITE



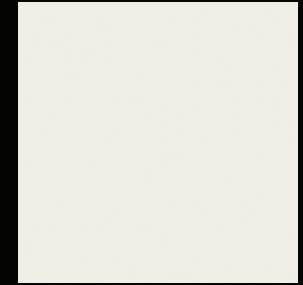
CHANTILLY LACE



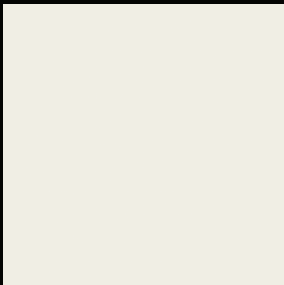
OXFORD WHITE



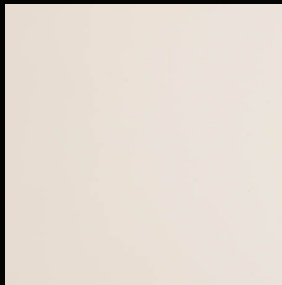
WHITE DOVE



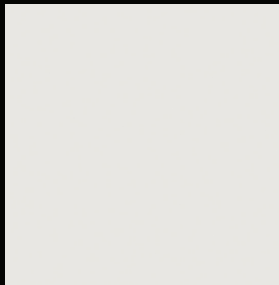
SWISS COFFEE



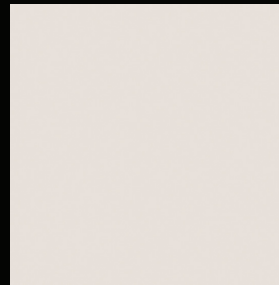
LIGHT FRENCH GRAY



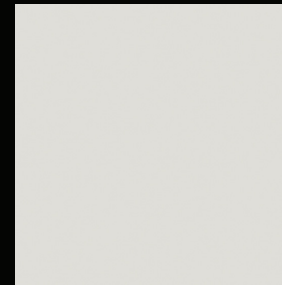
WARM WHITE



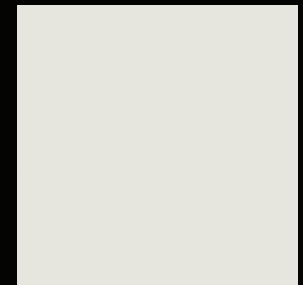
CALM



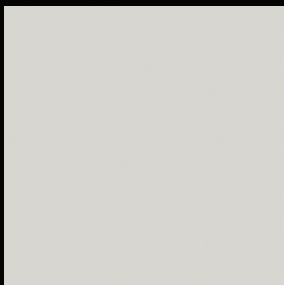
EVERYDAY WHITE



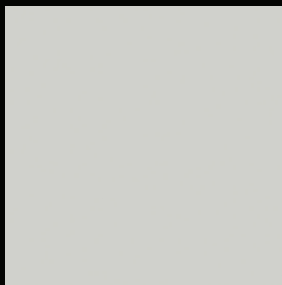
SOLSTICE



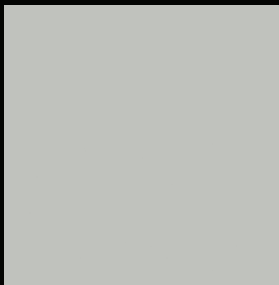
SILVER SATIN



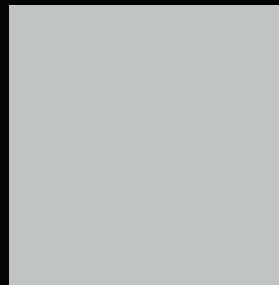
SKIPPING ROCKS



STONINGTON GRAY



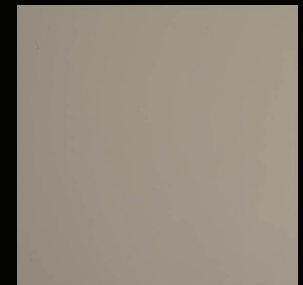
COVENTRY GRAY



MONORAIL SILVER

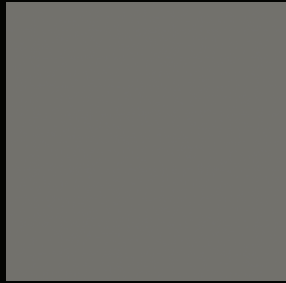


SUMMIT GRAY



STEEL GRAY

PAINTS



KENDALL CHARCOAL



CRACKED PEPPER



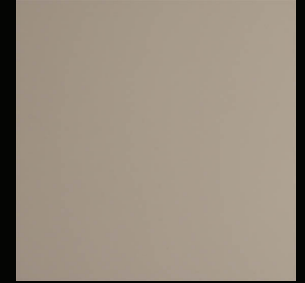
IRON ORE



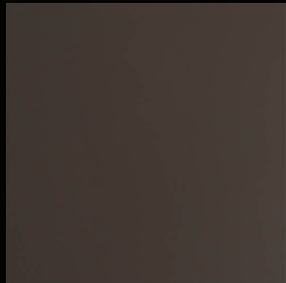
CAVIAR



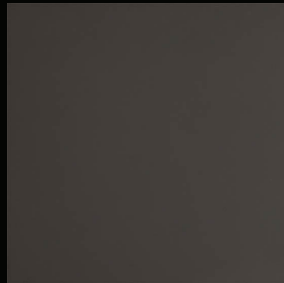
JET BLACK



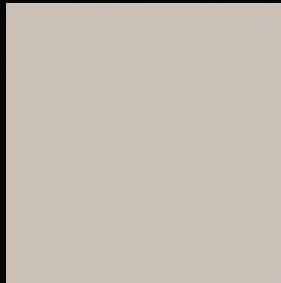
CEMENT



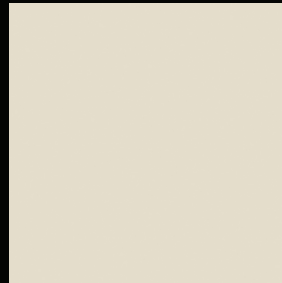
ELEPHANT



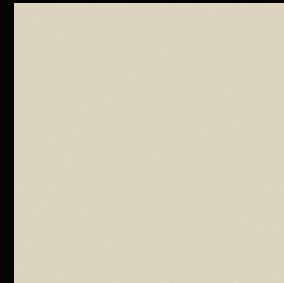
WARM GRAY



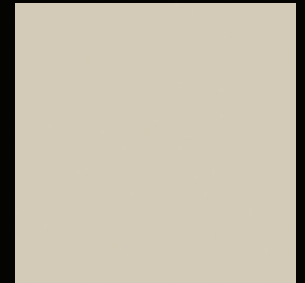
BOULEVARD



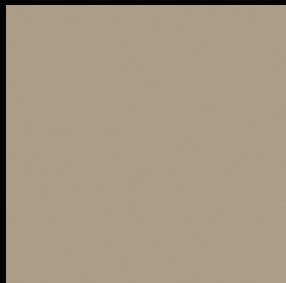
WHITE SAND



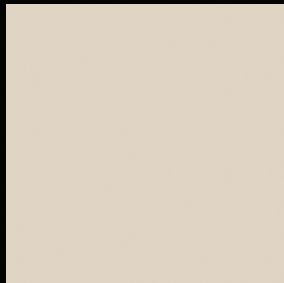
NATURAL LINEN



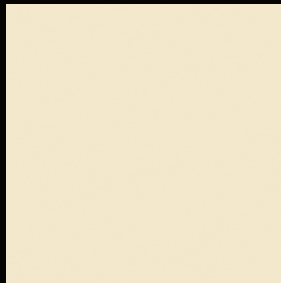
CARGO PANTS



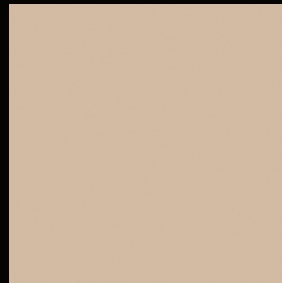
ALEXANDRIA BEIGE



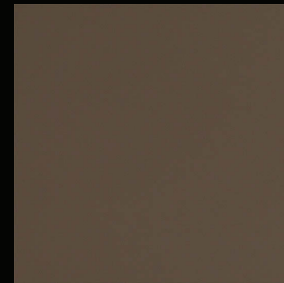
RIVER'S EDGE



RICH CREAM



TAWNY TAN

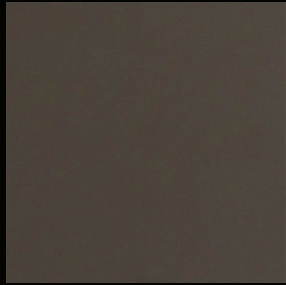


CAFÉ AU LAIT



ROJO MARRÓN

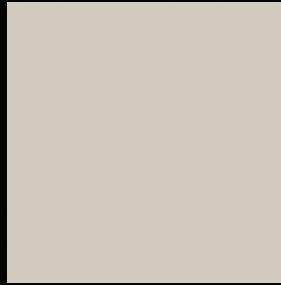
PAINTS



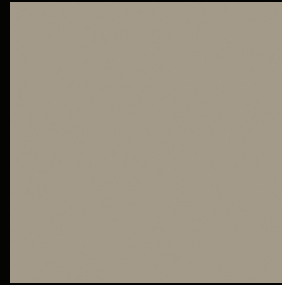
RIVER ROCK



BALBOA MIST



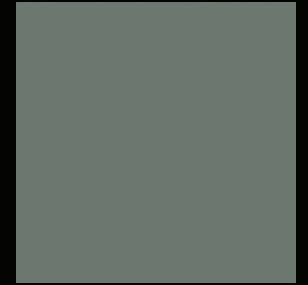
REVERE PEWTER



ZEUS



URBANE BRONZE



SUCCULENT



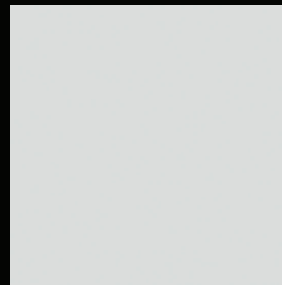
FOXHALL GREEN



ANDIRON



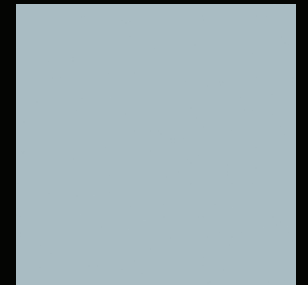
BLACK EMERALD



WINDCHILL



ENGLISH BLUE



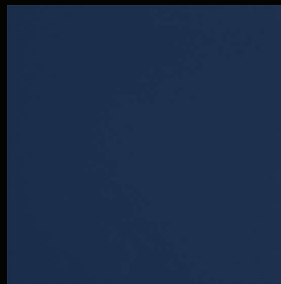
DOCKSIDE BLUE



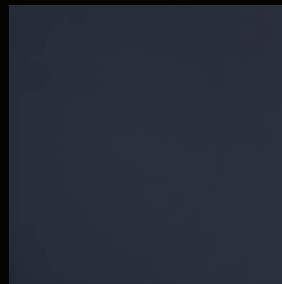
WALL STREET



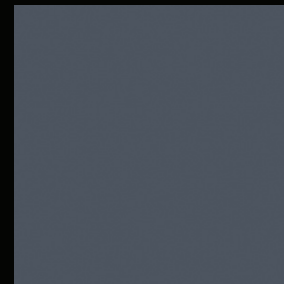
SANTORINI BLUE



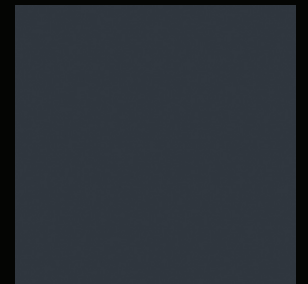
PORTUGUESE BLUE



FRENCH BLUE

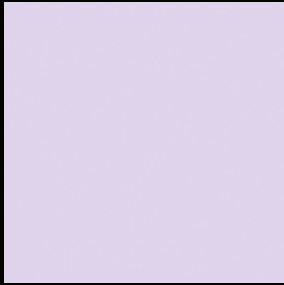


HALE NAVY

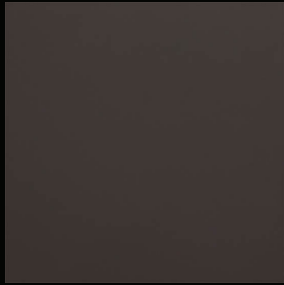


AFTER THE STORM

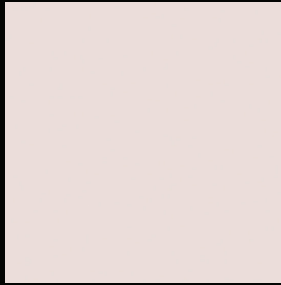
PAINTS



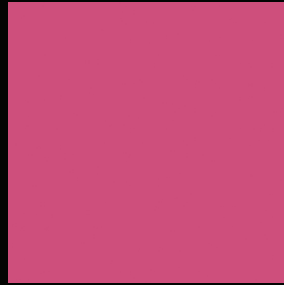
LILY LAVENDER



FIG



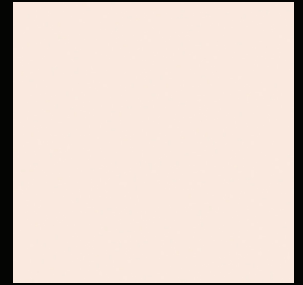
PROPOSAL



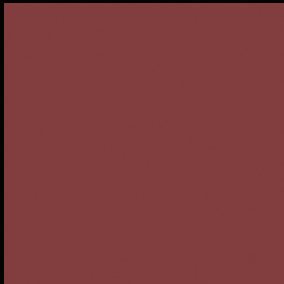
PEONY



PLUM



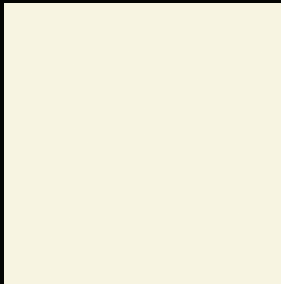
PEACH PARFAIT



DINNER PARTY



BRICK



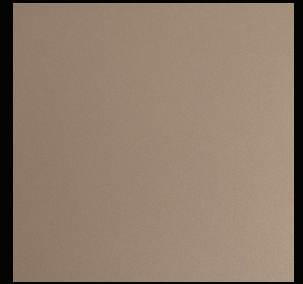
LEMON CHIFFON



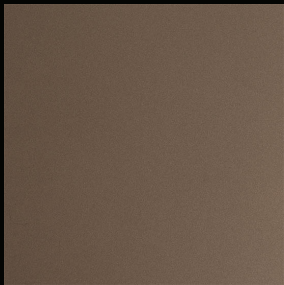
HAWTHORNE YELLOW



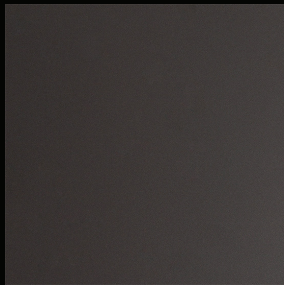
METALLIC:
PEARL



METALLIC:
SAND



METALLIC:
MUD



METALLIC:
COAL

VENEERS

PRESERVING THE EXOTIC

Exotic wood species are hand-selected, specific to each project and finished using a state-of-the-art transparent staining process which tones the veneer to the desired color while preserving the natural beauty. The result is a truly one-of-a-kind and personalized kitchen that can never be duplicated.



VENEERS



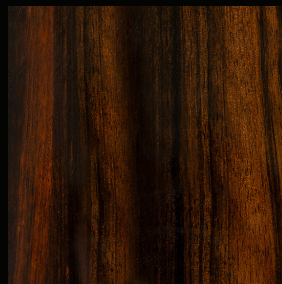
ANIGRE GROTTTO



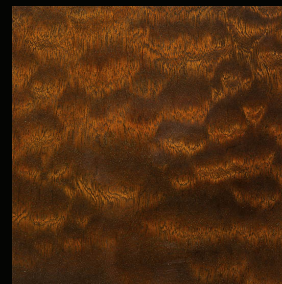
BIRDSEYE MAPLE,
GROTTTO



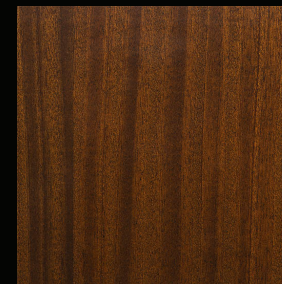
ENGLISH SYCAMORE,
NATURAL



MACASSAR EBONY,
ETUDE



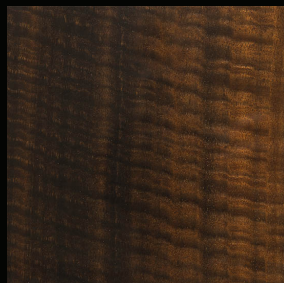
POMMELE SAPELE,
ETUDE



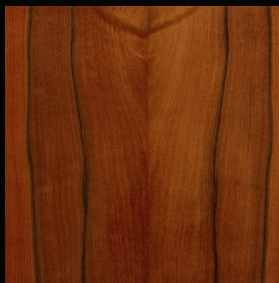
RIBBON MAHOGANY,
ETUDE



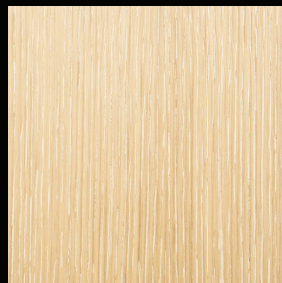
SMOKED CEREJIERA,
NATURAL



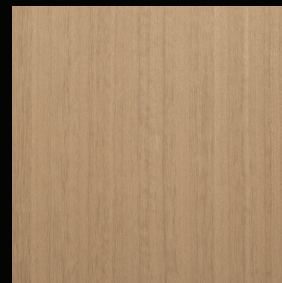
SMOKED
EUCALYPTUS,
NATURAL



AMERICAN APPLE PIE,
NUTMEG



RIFT OAK WHEAT,
FLAT BRUSHED

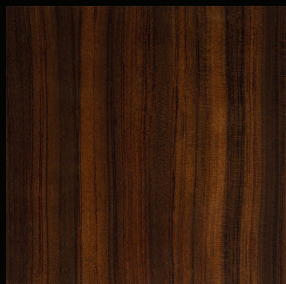


TAN AVODIRE,
NATURAL

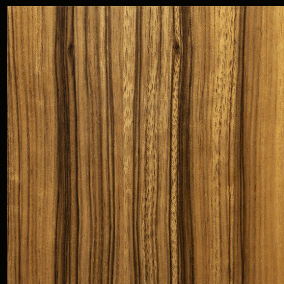


ELM FLAT CUT, FLINT

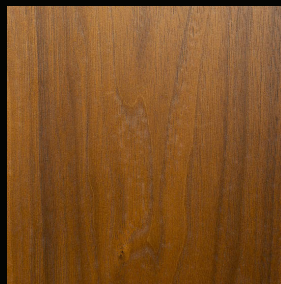
VENEERS



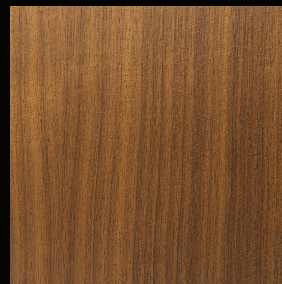
BUBINGA
 QUARTER CUT,
 GROTTTO



PALDAO
 QUARTER CUT,
 NATURAL



WALNUT FLAT CUT,
 CARMEL



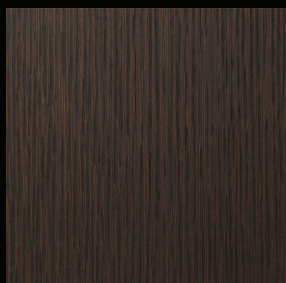
WALNUT
 QUARTER CUT,
 TORTONA



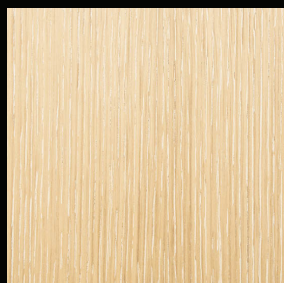
WALNUT FLAT CUT,
 ETUDE



WHITE OAK FLAT CUT,
 CHARCOAL GLAZE



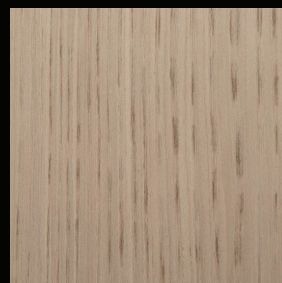
WHITE OAK RIFT CUT,
 TRUFFLE GLAZE



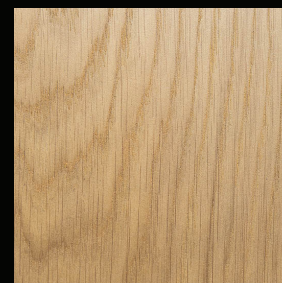
WHITE OAK RIFT CUT,
 WHEAT



BIRDSEYE MAPLE,
 TUDOR



BLEACHED WOOD,
 NATURAL



WHITE OAK FLAT CUT,
 HEATHER



WHITE OAK RIFT CUT,
 GRAPHITE GLAZE

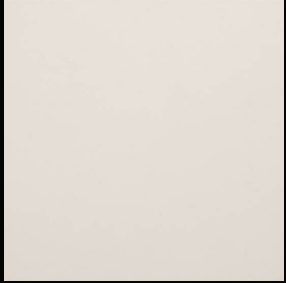
INTERIOR FINISHES

GIVE VOICE TO EVERY INCH

The variety of finishes casts attention within. NEFF's custom interior finishes highlight that which is often overlooked and manufactures the transformative. Design from the inside out.



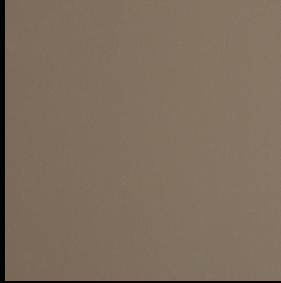
INTERIOR FINISHES



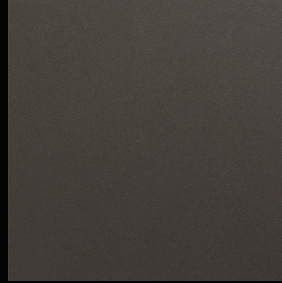
ICE WHITE



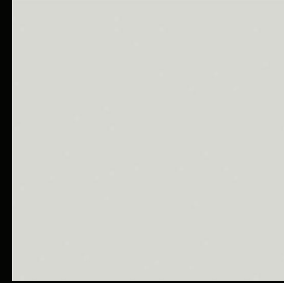
CUBANITE



STONE



RHODIUM



GLACIER



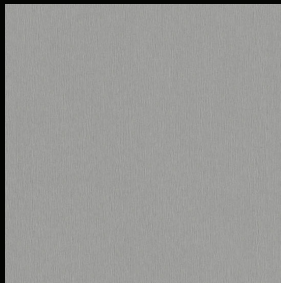
BLACK BIRD



MODERN ASH



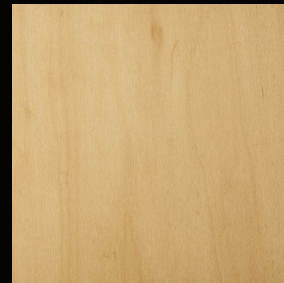
TOP GUN GREY



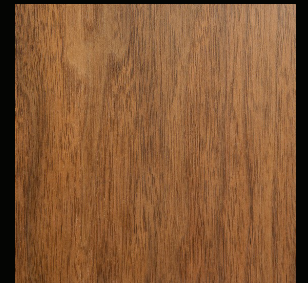
BRUSHED ALUMINUM



PELTRO

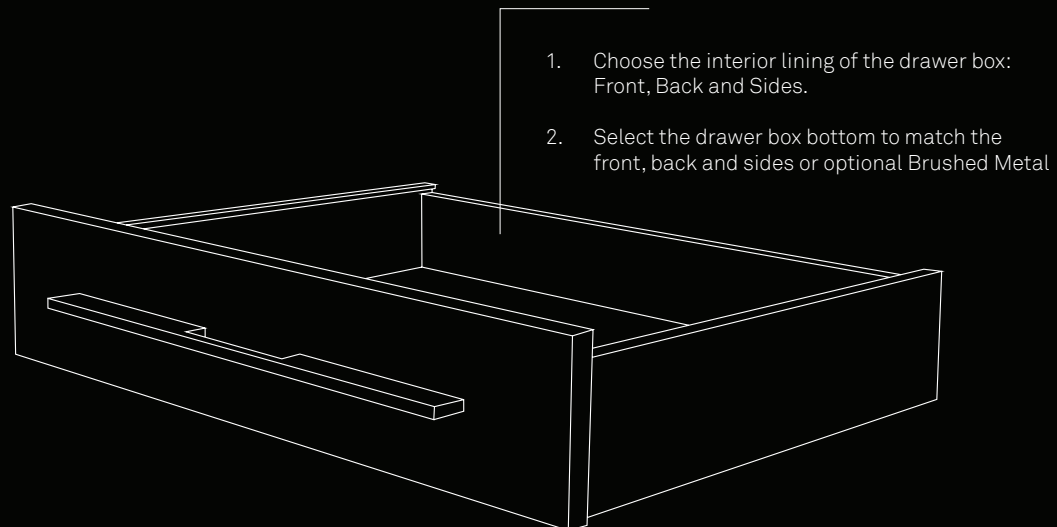


PRE-FINISHED
MAPLE VENEER



PRE-FINISHED
WALNUT VENEER

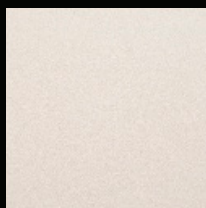
INTERIOR FRONT, BACK & SIDES



VINYL (STANDARD OPTION)



CUBANITE



ICE WHITE

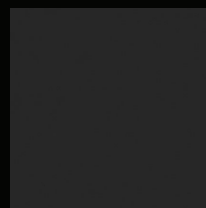


RHODIUM

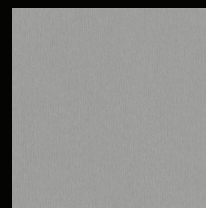


STONE

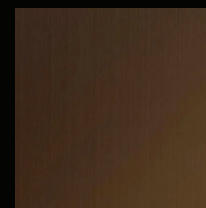
METAL



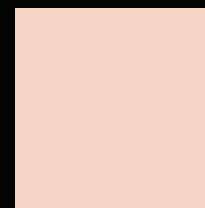
INOX



NO.13

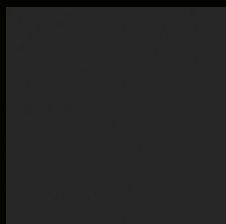


BRONZATO

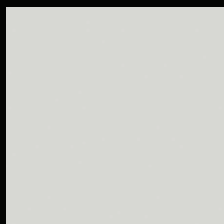


PROSECCO

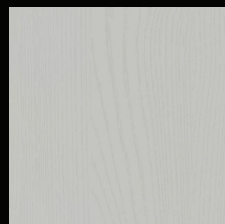
THERMOLAMINATE (UPGRADE OPTION)



BLACK BIRD



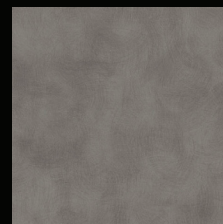
GLACIER



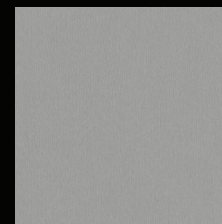
MODERN ASH



TOP GUN GREY



PELTRO



BRUSHED
ALUMINUM

LEATHERS

BEAUTIFUL BY NATURE

A collection of genuine leather finishes delicately treated to take on a variety of hues, which complement and enhance the vision of fine décor.



LEATHERS



DASH



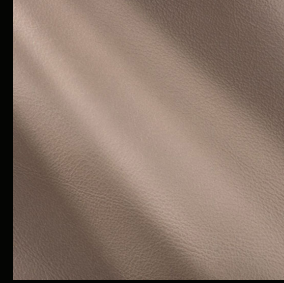
IVORY



LINEN



ASHPHALT



SIENA



GRAYSTONE



MOONSTONE



PUMA



CACAO

MAKE IT METAL

WELDING PERFECTION

Durable, contemporary and aesthetically vivid metals, each cultivated and brushed with unique finishes that bring and evoke new personalities.



MAKE IT METAL



SILKY SMOOTH BRASS



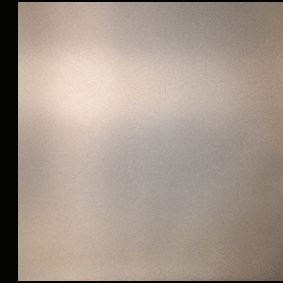
CASTED BRASS



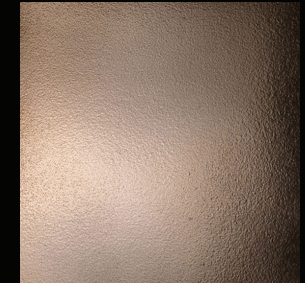
BRASS CORKBOARD



BRASS
BRUSHED PATINA



SILKY
SMOOTH BRONZE



CASTED BRONZE



BRONZE ROCKY ROAD



SILKY
SMOOTH COPPER



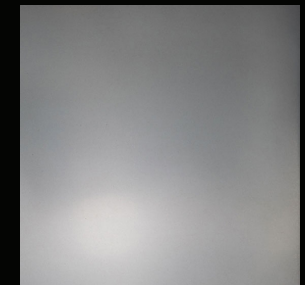
SMOKY COPPER



SMOKY GOLD



SILKY SMOOTH GOLD



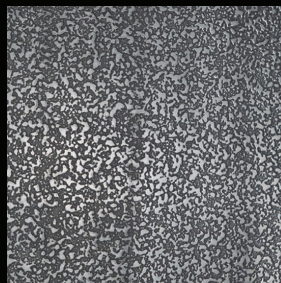
SILKY SMOOTH IRON



SMOKY IRON



IRON
BRUSHED PATINA



NICKEL SILVER
ROCKY ROAD



SMOKY
WHITE BRONZE

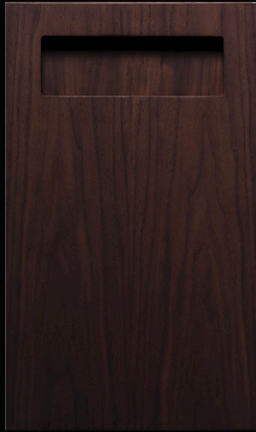
DOOR STYLES

TEXTURE, PATTERN, SHAPE IN HARMONY

Whether Contemporary, Traditional or Transitional, NEFF's vast selection of door styles opens up infinite possibilities for the designer. NEFF also provides the flexibility to customize their own door styles.



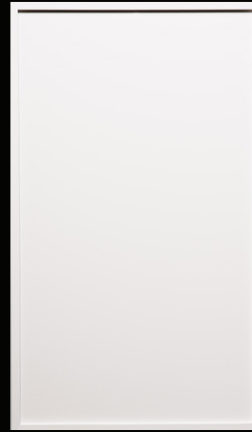
DOOR STYLES



STYLE 26



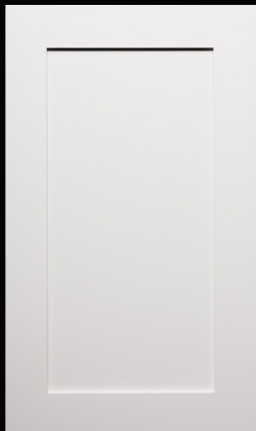
STYLE 27



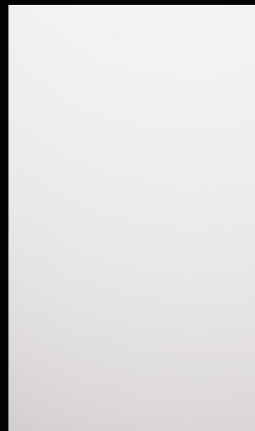
STYLE 28



STYLE 29



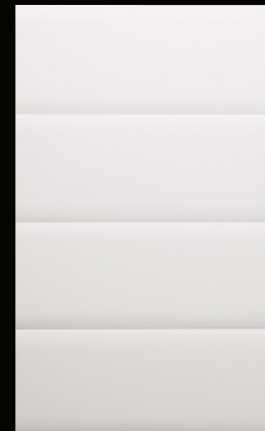
STYLE 31 & 32



STYLE 35 & 37

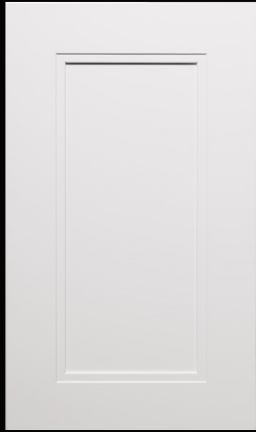


STYLE 43

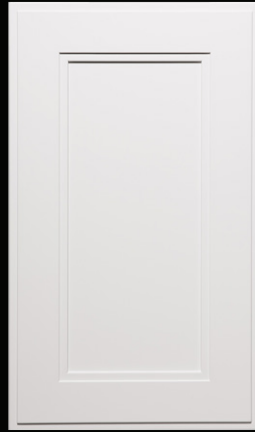


STYLE 51

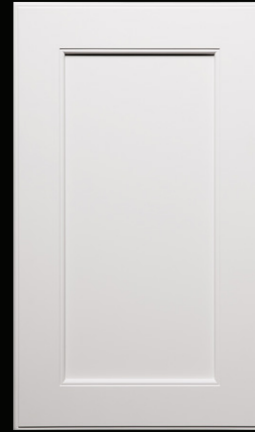
DOOR STYLES



STYLE 52



STYLE 53



STYLE 55



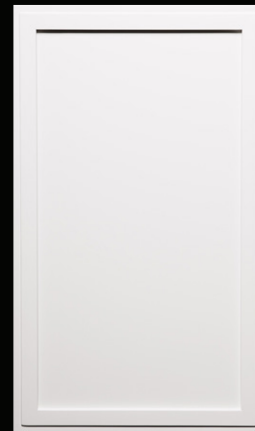
STYLE 56



STYLE 68



STYLE 74



STYLE 80

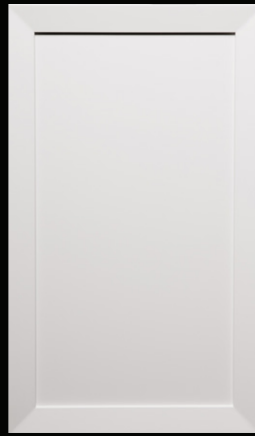


STYLE 81

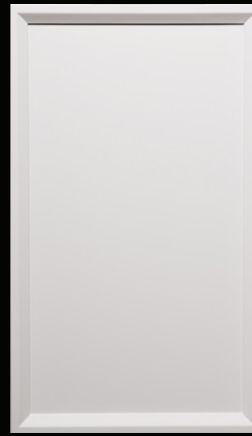
DOOR STYLES



STYLE 82



STYLE 83



STYLE 84



STYLE 87

HARDWARE

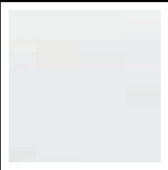
A SPARK OF PERSONALITY

NEFF produces quality hardware varied in type, size and color that meets the high standards of its brand, complements the existing design vision and completes the final details.

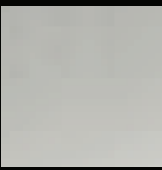


HARDWARE

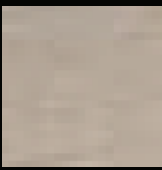
MATERIAL



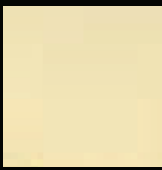
CHROME



NO.13



PROSECCO



CHAMPAGNE

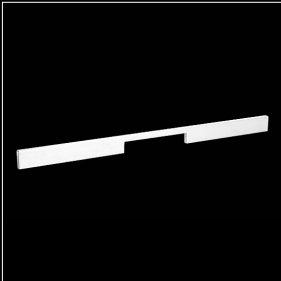


BRONZATO



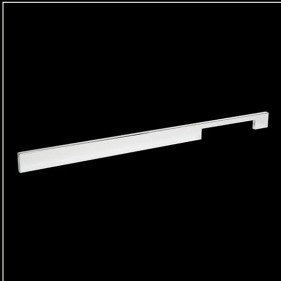
INOX

DESSAU COLLECTION



D1 CHROME

DESSAU, 45CM,
SYMMETRICAL HANDLE



D2 CHROME

DESSAU, 45CM,
ASYMMETRICAL HANDLE



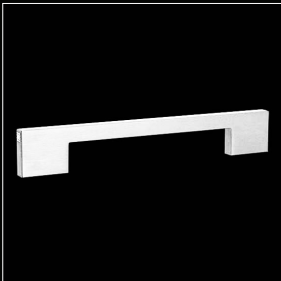
D3 CHROME

DESSAU, 25.6CM,
SYMMETRICAL HANDLE



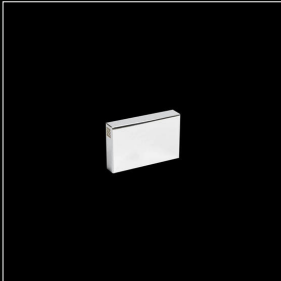
D4 CHROME

DESSAU, 25.6CM,
ASYMMETRICAL HANDLE



D5 CHROME

DESSAU, 17.3CM,
SYMMETRICAL HANDLE



D6 CHROME

DESSAU, 4.5CM, KNOB



D7 CHROME

DESSAU, 39CM,
APPLIANCE HANDLE

ACCESSORIES

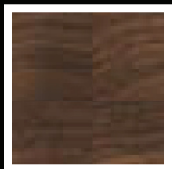
THE LIVING CREATION

NEFF's custom accessories and inserts are the finishing touches. Offering the top names in the industry, NEFF introduces these established relationships to the client. In the end, pieces of perfection will always find each other.



ACCESSORIES

MATERIAL



WALNUT



OAK

DRAWER ACCESSORIES



1 COMPARTMENT
FRAME, WALNUT



1 COMPARTMENT
FRAME, WALNUT



2 COMPARTMENT
FRAME, WALNUT



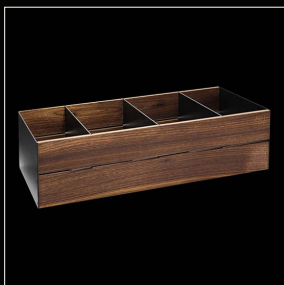
5 COMPARTMENT
FRAME, WALNUT



WRAP HOLDER,
WALNUT



KNIFE ORGANIZER,
WALNUT



4 COMPARTMENT
DEEP FRAME,
WALNUT



10 COMPARTMENT
DEEP FRAME,
WALNUT



1 COMPARTMENT
BOX, WALNUT



DIVIDER, WALNUT



DISH PEG INSERT,
WALNUT



PLATE HOLDER
MEDIUM, WALNUT

THE NEFF DIFFERENCE:

STANDARD FEATURES AND BENEFITS

Construction: European Frameless, with full overlay doors/drawer fronts, NEFF has a unique approach to construction. Our panel system attaches sections of varying thickness to exposed cabinets ends and provide a furniture quality fit and finish. Steel Conformat screws (dowels) with no glue/staples are used in assembly, and full top and bottom weight bearing with sides (gables) between provides the ultimate in strength and structural integrity (ideal for carrying the load of heavy countertops). Owing to the screwed construction, cabinet boxes can be easily disassembled, modified (on-site obstacles/pipe chases, etc.) and re-assembled, staying square during delivery and installation.

Standard Cabinet Interiors: All plywood, $\frac{3}{4}$ " Baltic Birch (layers running lengthwise and crosswise bonded with very low VOC/98% formaldehyde free phenolic resin). A recessed $\frac{1}{2}$ " full height back panel (recessed back with hanging brackets to accommodate a hanging rail*). Fixed and adjustable shelves are stacked $\frac{3}{4}$ " thick, with tight and consistent $\frac{1}{8}$ " (3mm) reveals/spaces between all doors/drawer fronts allowing for bind free opening/closing of all facings and a very high-end, sleek look.

*Optional hanging rail facilitates expedited leveling/assembly of Upper cabinets;

Concealed Hinges: Blum, Soft-close, 6-way adjustability, attached directly to cabinet gables/walls.

Drawer Box and Slides: NEFF exclusive, Metal or dovetail wood. Slides are premium Blum, steel, side mounted, full extension, featuring Blumotion soft-close. Side to side, up/down, front/back adjustability.

Adjustable Cabinet Levelers: Easily adjustable up/down from the standard of 4" (102mm). Toe kick is provided in lengths—to be cut and assembled in the field to minimize the number of seams and provide a highly customized aesthetic;

Patented Dry-Fit Process: Installs, fully assembles and stages the cabinet boxes into NEFF's custom-built staging areas ensure functionality and precision.



BOX CONSTRUCTION

NEFF PLYWOOD WITH VINYL INTERIORS

- 3/4" (19mm) Baltic Water Resistant Plywood base, top, sides
- 1/2" (12mm) Baltic Water Resistant Plywood back
- Screwed base construction

NEFF PLYWOOD WITH PRE-FINISHED VENEER

- 3/4" (19mm) Pre Finished Maple or Walnut Plywood base, top, sides
- 1/2" (12mm) Pre Finished Maple or Walnut Plywood back
- Screwed base construction



DRAWER CONSTRUCTION

NEFF METAL

- 5/8" (16mm) Baltic Birch Water Resistant Plywood Base
- 1/2" (12mm) Baltic Birch Water Resistant Plywood Sides and Back
- Prefinished Anodized or Painted Aluminum Sides
- Screwed Construction

NEFF WOOD

- 5/8" (16mm) Prefinished Maple / Walnut Plywood Base
- 1/2" (12mm) Prefinished Maple / Walnut Plywood Sides and Back
- Screwed Construction
- Screwed base construction

DOVETAIL

Solid Maple or Walnut Dovetailed



DRAWER CONSTRUCTION

SCRATCH RESISTANT VINYL LAMINATE

- PVC film that is produced using an innovative Physical Surface Treatment (PST) technology to create a superior matt appearance.
- Premier Matt has a number of superior properties including anti-fingerprint, scratch and stain resistance, easy cleaning and thermal healing properties. It presents a sleek surface with low light reflectance:
- Anti-fingerprint: greasy and sticky finger marks no longer spoil the appearance of your kitchen, just buff with a soft dry cloth for a spotless finish.
- Scratch resistant: reduces the visibility of micro scratches keeping your furniture looking newer for longer.
- Stain resistant: coloured food spills no longer persist, our product is tested according to European standards against a long list of typical foods and liquids.
- Easy clean: simply wipe away cooking splashes and spills with the wipe of a cloth and a mild detergent. Even dried on spills are easy to remove.
- Thermal healing: magic away slight scuffs and scratches with the application of gentle heat.



DOOR CONSTRUCTION

PAINTED

- Platinum Grade 3/4" - 1" (19mm - 25mm) MDF

VENEER

- Platinum Grade 3/4" - 1" (19mm - 25mm) MDF

EURO-LAMINATE

3/4" (19mm) Eurolaminate



DOOR CONSTRUCTION

BASF AUTOMOTIVE PAINT

- UNO technology performs and exceeds to American Architectural Manufacturers Association's publication numbers.
- UNO HD can produce varying degrees of gloss. Custom colours are available in both conventional and Low VOC options.
- Offers heat management coatings using special pigment technology. This reduces heat absorption in dark colours and lowers surface temperature strain, providing coatings with longer service life.
- Recommended for use on prepared aluminum, steel, plastics and composite substrates.
- Along with its full palette, NEFF offers bespoke colours and the ability to colour match any custom paint. Baked on through a resoundingly integrative process, we only use BASF automobile paint, the very same ones used on Bentleys and private jets. They are durable, easy to clean and of the finest quality—finished in matte, silk or high-gloss.

NATURAL VENEER CLADDING WITH CHOICE OF FINISHES

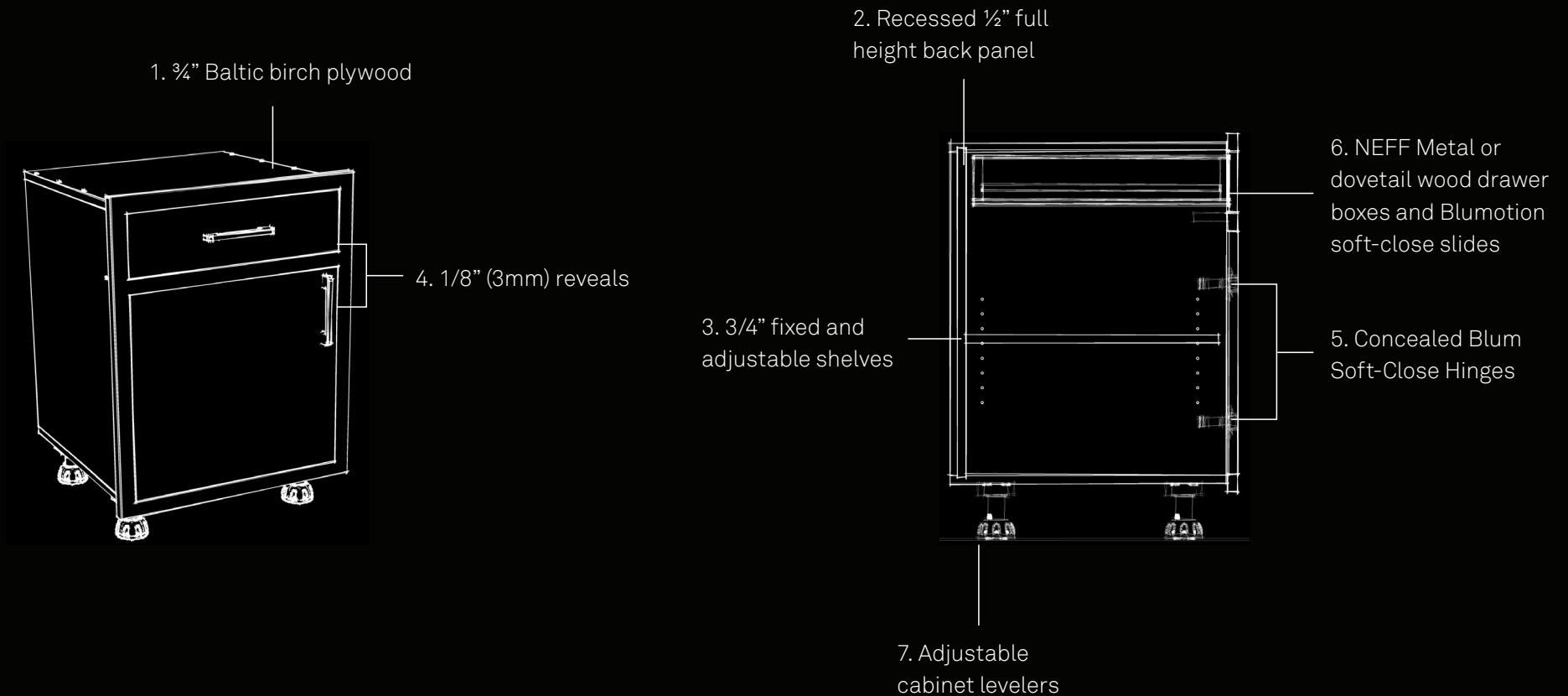
- UNO technology performs and exceeds to American Architectural Manufacturers Association's publication numbers.
- UNO HD can produce varying degrees of gloss. Custom colours are available in both conventional and Low VOC options.

- Offers heat management coatings using special pigment technology. This reduces heat absorption in dark colours and lowers surface temperature strain, providing coatings with longer service life.
- Recommended for use on prepared aluminum, steel, plastics and composite substrates.



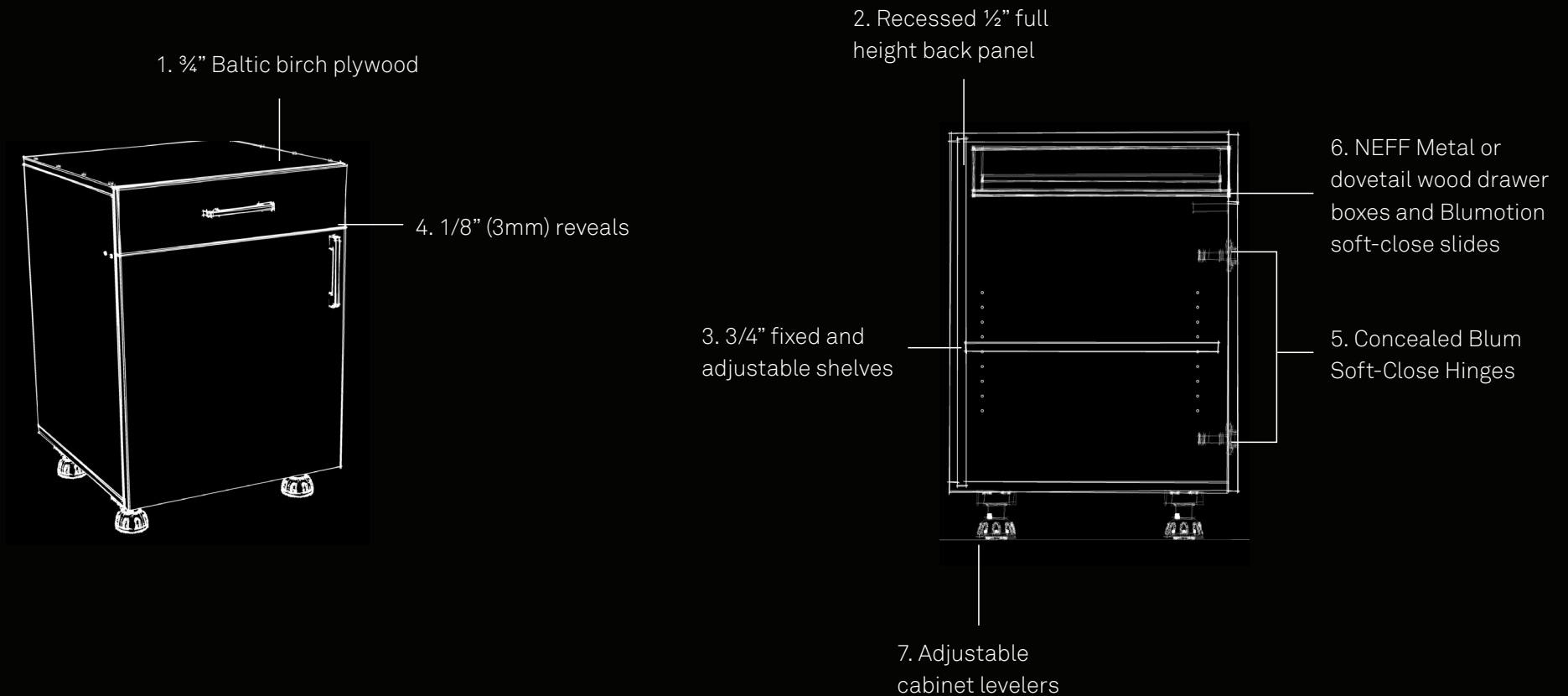
CABINETY CONSTRUCTION

FLUSH INSET



CABINETY CONSTRUCTION

FULL OVERLAY





EXPERIENCE

THE PERFECT APPROACH.

Each department consists of industry specialists that work with proven technique and pay meticulous attention to detail. With a family culture approach, the NEFF process is based in continued improvement with the goal of fitting perfection. The automated systems and patented dry-fit process that installs the product into NEFF's custom-built staging areas are overseen by the Staging Completion Checklist to ensure functionality, precision and accountability.

The Staging Completion Checklist is a step-by-step examination of the product by stagers, technicians and design experts. If the dimensions, material finishes and aesthetics, functionality, accessories and appliances meet the high standards of the NEFF Beautiful Living team, they will be approved and the process will move to the next stage.

Necessary to be signed internally by all those involved, the Staging Completion Checklist starts with the design and it ends with installation, in which concerns, if any, and notes are written for the end-installer to consider when installing the product into the client's space.





WARRANTY

THE PROMISE OF TIME.

NEFF offers 8-year limited warranties on all Beautiful Living products. Very few manufacturers stand behind their products as long as NEFF.

- Products guaranteed to be free of material defects in materials and workmanship for eight years.
- Timely repair and replacing warrantied products to their original specifications.
- Free shipping of the repaired or replaced product to the customer.



